



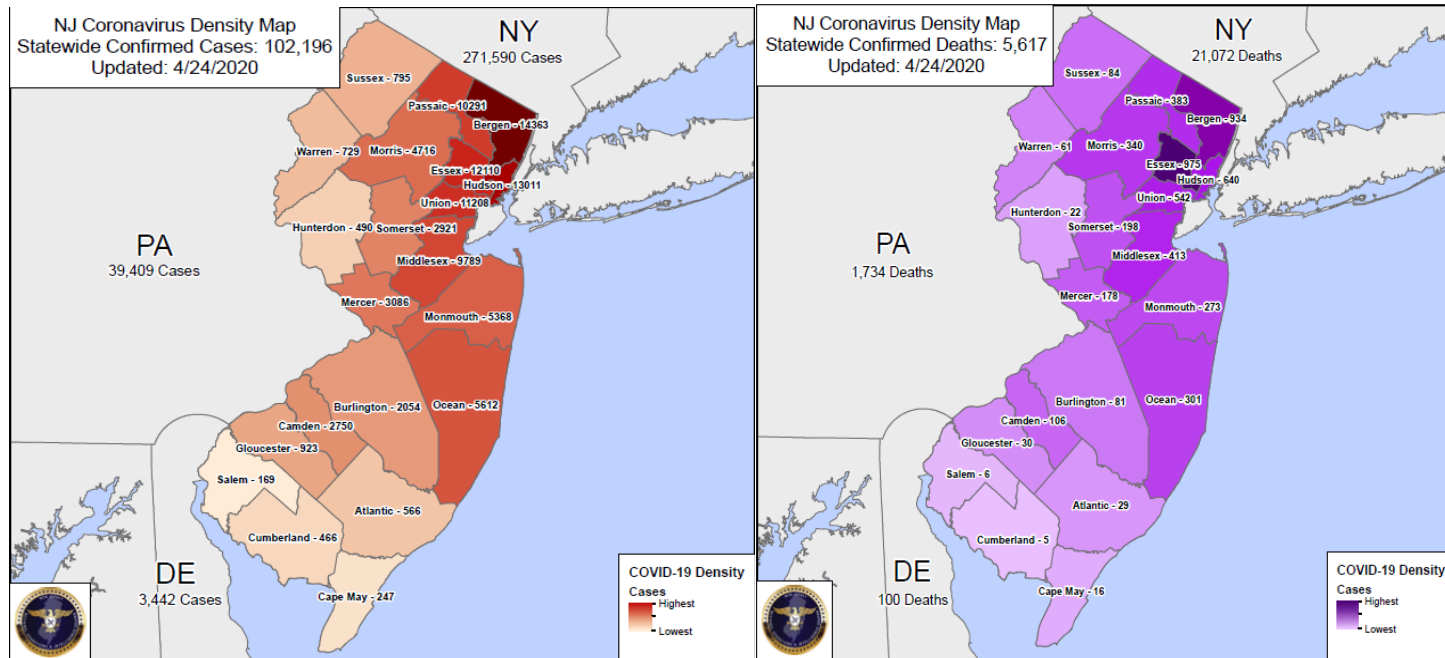
**New Jersey Office of Emergency Management  
State Emergency Operations Center  
COVID-19 Event  
Situation Report #45  
April 24, 2020  
1700 hours**

*\*Changes from previous SitRep in **Red BOLD***

The State Emergency Operations Center (SEOC), (609) 963-6900 daily hours and levels are listed below:

- 0800hrs and 1800hrs, Full Activation Level 1- contact SEOC at Ext 2.
- 1800hrs and 0800hrs, Enhanced Monitoring Level 3-contact IWW at Ext 1.

**Current Stats and Links:**



As of 1500hrs 4/24/2020	Total Cases	Total Deaths
Worldwide	2,783,512	195,313
United States	886,213	50,360
New Jersey	102,196	5,617

Center for Systems Science and Engineering at Johns Hopkins University: <https://coronavirus.jhu.edu/map.html>

NJDOH COVID19 Dashboard: [https://www.nj.gov/health/cd/topics/covid2019\\_dashboard.shtml](https://www.nj.gov/health/cd/topics/covid2019_dashboard.shtml)

Rutgers COVID-19 Daily Tracker

<https://rand.camden.rutgers.edu/2020/04/03/covid-19-daily-tracker/>

Washington State Modelling site; <https://covid19.healthdata.org/>

:-



## ESF #1 Transportation

- There is no travel ban on NJ roadways. The Governor requested that people stay off the roads during the COVID-19 emergency unless they are providing or seeking to obtain essential services or supplies.
- Executive Order No. 121, Allowing Greater Weight Limit for Vehicles Carrying COVID-19 Relief Supplies  
<https://nj.gov/infobank/eo/056murphy/pdf/EO-121.pdf>
- The NJDOT has created a new limited time OS/OW permit called the Unplanned Divisible Load Emergency Move permit. This permit will cover the weight tolerance increases referenced about below for the vehicles transporting relief supplies during the COVID-19 crisis. It is also described in section 3.3 of the Commercial Vehicle Size and Weight Guidebook  
<https://nj.gotpermits.com/njpass/Permits/DownloadStateAttachment?index=2> and on their Superload permit website <https://nj.gotpermits.com/>
- Governor issued EO-125 reducing capacity on NJTRANSIT trains, buses, Light Rail and private carriers by 50%, and requiring employees and customers to wear face coverings when on board all modes of transit.
- NJ Transit will update information at the following link;  
[https://www.njtransit.com/var/var\\_servlet.srv?hdnPageAction=COVID19ProtectionTo](https://www.njtransit.com/var/var_servlet.srv?hdnPageAction=COVID19ProtectionTo)
- NJ Transit updated schedules are available at the following link;  
[https://www.njtransit.com/hp/hp\\_servlet.srv?hdnPageAction=HomePageTo](https://www.njtransit.com/hp/hp_servlet.srv?hdnPageAction=HomePageTo)
- New Jersey to New York, NY Waterway ferry service is suspended until further notice.  
<https://www.nywaterway.com/AdvisoryDetails.aspx?aid=655>
- Amtrak implemented major service adjustments  
<https://www.amtrak.com/alert/service-adjustments-due-to-coronavirus.html>
- The Port Authority of New York and New Jersey (PANYNJ) will update information at the following link;  
<https://www.panynj.gov/port-authority/en/alerts/coronavirus-updates.html>
  - Holland Tunnel construction will begin April 20 for approximately two years. Traffic from NJ to NY will be shut down from 11 p.m. to 5 a.m. on weekdays and 11 p.m. to 8 a.m. on weekends, except on Saturday.
- The FMCSA has developed the following website which houses up-to-date information and resources pertaining to COVID-19.  
<https://www.fmcsa.dot.gov/COVID-19>
- The President has extended the exemptions of the Emergency Declaration through May 15, 2020. Certain liquefied gases used for refrigeration or cooling have also been added to the relief supply list. Please see the link below for the Emergency Declaration Extension and the addition(s) to the relief supply list.  
<https://www.fmcsa.dot.gov/emergency/expanded-emergency-declaration-under-49-cfr-ss-39023-no-2020-002-relating-covid-19>
- All New Jersey MVCs will be closed until **May 11, 2020. All driver licenses (including CDL's), non-driver IDs, registrations, and inspection stickers expiring before May 31 have been extended by two months.** Details can be found at the following link <https://www.state.nj.us/mvc/>

## ESF #3 Public Works & Engineering / ESF #10 Hazardous Materials

- NJDEP continues to monitor COVID-19 situation updates and coordinate with NJESF-3 and NJESF-10 stakeholders and partners. The Water & Wastewater, Dams, Chemical & Hazardous Materials, Petroleum, Nuclear, Radiological, Solid & Hazardous Waste sectors/facilities continue to protect their operations. Main concerns revolve around staffing, supply chain shortages, adequate personal protective equipment critical for worker protection, exemptions for essential businesses that provide services/support to ensure continuous operations, credentialing for essential personnel, and permit compliance.

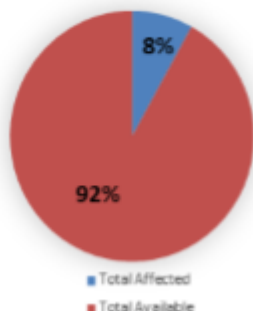


- NJDEP COVID-19 Regulatory Compliance webpage contains COVID-19 specific Administrative Orders, Advisories, Notices, and Memos - check regularly for updates:  
<https://www.nj.gov/dep/covid19regulatorycompliance>
- Per EO-118, all state parks and forests are closed to the public until further notice. This full closure includes all park lots, grounds, facilities, trails, playgrounds. All park gates and entrances are closed. Trail use, hunting, and fishing is prohibited. Park areas will be patrolled by NJ State Park Police to ensure the public is following the Governor's directives to stay home to help limit the spread of COVID-19. For updates:  
<https://njparksandforests.org>

### ESF #4 Fire

- **As of 1000hrs 4/24 zero stations are out of service**
- **Fire Readiness Report (as of 4/15)**

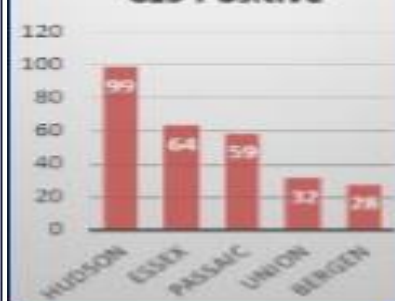
Fire Strength Survey Numbers:  
Available vs. Affected



Top Departments Testing  
Positive for COVID-19



Top 5 Impacted  
Counties:  
C19 Positive



#### Survey Results:

- Reports from 477 Fire Departments
  - (65% response rate)
- 332 FP statewide testing COVID-19 positive
  - (+14.5% from previous week)
- 8 FP hospitalized due to COVID-19
  - (-11% from previous shift)
- 403 FP quarantined
  - (-19% from previous week)
- 1,023 FP out for other reasons
  - (+4% from previous week)
- 89% of Departments report 90-100% working capacity
- 83% report PPE is or may become critical

### ESF #6 Mass Care

NJDHS information at the following link - <https://nj.gov/humanservices/coronavirus.html>

- Working with NJOEM resource Unit on PPE Requests and Delivery, recognizing Community Providers are in need of PPE.
- NJOEM Team formed a Non-Congregate Shelter Task Force to work on solutions to house those suspected of having COVID-19 signs and symptoms in a hotel setting. NJDHS is a part of this team that consists of NJOEM, FEMA, NJDOH, and NJDCF personnel and is assisting with coordinating a statewide contract.
- Continue to explore additional facilities for future quarantine of Developmental Centers/ Group Home clients, if needed. Operations here will also depend on policy and contractual issues.



- Ensuring vulnerable populations are taken care of during this event. Keeping an eye on this through County OEMs, Division leads and other partners to identify impacted vulnerable populations and define an approach to conducting wellness checks on them, utilizing Register Ready and other sources of data.
- Coordinate Volunteer support through Governor's Office of Volunteerism (GOV), NJVOAD, State VAL to support volunteer opportunities across the State. Volunteer Support plan being worked on by GOV, NJVOAD and State VAL. Governor announced new volunteer portal [www.helpnjnow.org](http://www.helpnjnow.org) or [www.Covid19.nj.gov/help](http://www.Covid19.nj.gov/help)
- Crisis Counseling Line is open 7 days a week from 8am to 8pm – please call 866-202-4357 (HELP)
- New Jersey Department of Children and Families link of all current facilities that have been certified to care for the children of essential employee's in accordance with the Governor's EO 110  
[https://www.nj.gov/dcf/coronavirus\\_licensedchildcare.html](https://www.nj.gov/dcf/coronavirus_licensedchildcare.html)

### ESF #7 Resource Support

- ESF 7 volunteer manpower is available. If manpower is needed for tasks that can be done safely given the social distancing concerns, VOAD may be able to match the volunteers to assist.
- The Department of Treasury is providing requestors with vendor information for them to be able to purchase supplies on their own.
- Continuing private sector outreach, continuing to work on volunteer management procedures, and assigning E-Team requests for PPE under NJOEM in ESF 7.

### ESF #8 New Jersey Department of Health (NJDOH)

<https://www.nj.gov/health/cd/topics/ncov.shtml>

- In order to alleviate bed capacity issues within healthcare facilities, 3 Field Medical Stations (total capacity of 1000 beds) and 4 Disaster Alternative Care Facilities (total capacity of 430 beds) have been established throughout the State. Details can be found in the External Operations Section of this SitRep.
- In order to assist local municipalities with overcapacity issues affecting their local EMS, we requested 50 BLS and 24 ALS Ambulances from FEMA which was approved and delivered. NJEMS TF is overseeing the operations at MetLife Stadium where they are all staged. An additional request for 50 more BLS/50 more ALS units was submitted to FEMA. Request was approved and units are currently in NJ and operational. All of the original and incoming units are to alleviate the call volumes in surrounding jurisdictions. The first 75 will be demobilized and the new round of units will be operational on 4/23.
- 911 COVID call stats from Intel  
PUBLIC SAFETY ANSWERING POINT (PSAP/911 CALL CENTERS) SURVEY—**4/22**  
9-1-1 Call Volume:
  - **None of the reporting PSAPs reported their 9-1-1 call volume as much higher.**
  - **In 9 of the counties 17 PSAPs reported their call volume is somewhat higher than normal, slightly more than last report, they are:**
    - **Bergen County Communications**
    - **Dumont Police Department**
    - **Elmwood Park**



- **Maywood**
- **Cape May County Communication Center**
- **Vineland Police Department**
- **Hudson County Sheriff's Office 911**
- **Jersey City Medical Center**
- **Perth Amboy Police Department**
- **Woodbridge**
- **Howell Township Police**
- **Passaic County Sheriff's Office**
- **Passaic Police Department**
- **Newton**
- **Plainfield**
- **Rahway PD**
- **Roselle**
- **The remaining 105 PSAP's reported the call volume continues to be much lower, somewhat lower or the same with many PSAPs continuing to report that while overall call volume is down, EMS and administrative calls are higher.**

#### Staffing Concerns:

- Of **the 122** PSAPs responding only **5** reported staffing concerns as bad:
  - **Glen Ridge**
  - **Newark Police Communications**
  - **North Caldwell Police Department**
  - **Jersey City Medical Center**
  - **RWJ Barnabas Health EMS**
- **43** PSAPs reported staffing as good or very good.
- The remaining **74** PSAP were neutral in their staffing concerns.

#### Staff Shortages Related to COVID-19:

- **33** PSAPs reported staff outages related to COVID-19 with **5** of these PSAPs indicating staffing concerns as Bad.
- NJ 2-1-1 is live. Residents can also text NJCOVID to 898-211 to receive text information and stay informed. To receive live text assistance, residents can text their zip code to 898-211. This will increase call capacity and reduce wait time.
- April **23**, 2-1-1 received **604** calls. Since March 18, a total of **23,270** calls have been received.
- Text "NJCOVID" to 898211 received **120,525** enrollments to date
- NJPIES received **429** calls April **23** with a total to date **25,853**
- Communicable Disease Service (CDS) is accepting COVID-19 calls from local health departments, health care providers, and medical facility staff. During regular business hours, Monday through Friday from 8am-5pm, call (609) 826-5964. After hours and weekends, please call (609) 392-2020.
- COVID-19 Temporary Enforcement Guidance for Fit Testing:  
<https://www.nj.gov/health/workplacehealthandsafety/documents/peosh/COVID%2019%20Enforcement%20Guidance-Fit%20Testing.pdf>





- State of New Jersey Emergency Medical Dispatch Guide cards  
<https://www.nj.gov/911/home/highlights/EMD%20Guidecards%202020%20Final.pdf>

#### **ESF #9 Urban Search and Rescue**

- USAR is currently supporting the Temporary Morgue sites

#### **ESF #11 Agriculture**

- No report

#### **ESF #12 NJBPU**

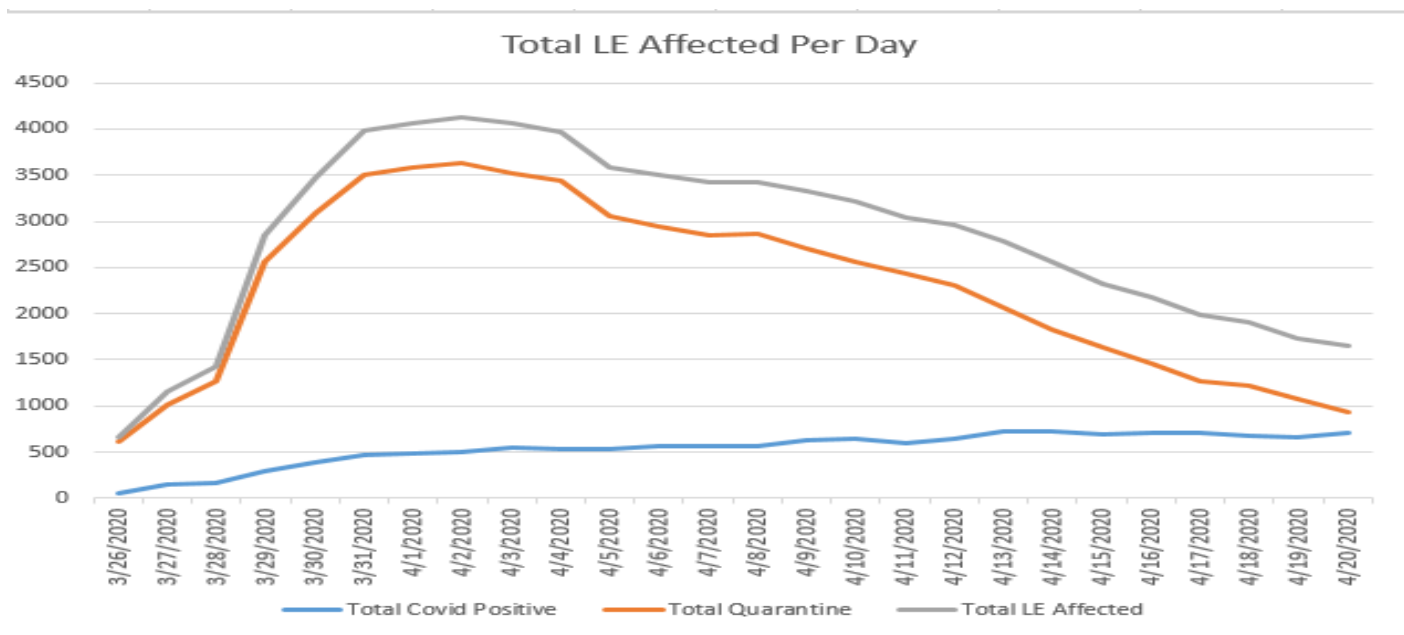
- BPU remains in constant contact with the utility sector. Some utilities have ceased entering private homes for service calls.
- BPU staff is conducting a PPE survey of regulated utilities to determine current and future needs
- For future planning purposes reviewing utility staff shortages, utility request to give priority testing to essential staff, possible need for hotel space for mutual aid utility workers, and sequestration of mission critical utility worker's initiative.
- **Setting up conference calls with the Electric Distribution Companies (EDCs) to plan for the start of the hurricane season on June 1.**

#### **ESF #13 Public Safety and Security**

- NJSP FOS is currently supporting numerous operations throughout the State.
- New Jersey Department of Corrections (NJDOC) temporarily suspended visits in order to mitigate the spread of the COVID-19 virus. This remains in effect.
- NJAOG is currently reviewing requests for clarification to EOs and AOs as well as requests from businesses requesting to be deemed essential.
- NJAOG current clarification on Executive Orders
  - Pet grooming / boarding and animal shelters are not retail and may operate.
  - EO's 107 & 122 does not prohibit the operation of storage facilities.
  - Private campgrounds (not recreational; for mobile homes) that are not parks or recreational areas but function as person(s) homes will not be shut down.
  - Automobile repossession businesses are not retail and may continue operations.



- Intel LE Readiness Report as of **04/22/2020**



#### **ESF #14 Long Term Community Recovery**

- COVID-19 Pandemic: Eligible Emergency Protective Measures;  
<https://www.fema.gov/news-release/2020/03/19/coronavirus-covid-19-pandemic-eligible-emergency-protective-measures>
- RPAs for DR-4488 can be entered at NJEMGrants <https://njemgrants.org/>
- NJOEM is coordinating with FEMA on potential eligible projects. There is a narrow spectrum of eligibility and the specific parameters are being worked out. Staffing, Equipment and other issues are addressed daily since there are many atypical Category B (Emergency Protective Measures) issues in this disaster.
- There is a Hospital Task Force that is staying ahead of potential eligibility and reimbursement issues.
- There are currently 520 Requests for Public Assistance (RPAs) and there will be more since we're still in the Response Phase.
- All 21 Counties and many municipalities have Project Worksheets (PWs) written.
- FEMA approved eligible funding for Non-Congregate Sheltering. This type of emergency sheltering is driven by the State, Counties, Towns or Agencies that need sheltering for certain individuals, health care workers or 1<sup>st</sup> responders. This may be for local hotel rooms and allows them to be isolated and not expose family members or others in the community.
- There are 2 Expedited Project Worksheets (PWs) approved so far by FEMA for NJ Counties (Bergen and Monmouth). There's also Expedited PWs for NJSP PPE purchases.
- FEMA has obligated Category Z funding (Administrative Costs) for NJOEM costs.

#### **ESF #15 External Communications and Intergovernmental Relations**

- (NJOEM) is coordinating with the Governor's Office PIO and is engaged with social media.
- Working with NJ 2-1-1 to craft strategic messaging based on call volume themes.
- Rumor control page: <https://www.njhomelandsecurity.gov/covid19>



### Resource Management (SEOC)

- 46 Resource Requests have been sent to FEMA for processing.
- PPE Resource Requests shipped out

PPE	Face Shields	Gloves	Gowns	N95 Masks	Surgical Masks	Grand Total
Total Shipped	328,486	5,057,670	203,106	2,782,562	6,492,425	14,864,249

- In order to accommodate the increased procurement and the need for receiving, warehousing and shipping of PPE, a Critical Resource Unit was created under Resource Management Section. This unit handles all of the planning and logistics as it relates to these items and includes an offsite warehouse where all items are shipped from.
- No requests for medicine or medical supplies (i.e. IV poles, BP machines) should be accepted. These items are not procured through this process (ETeam) and must be procured through agency's normal procurement procedures and policies.
- No food, water, or office supply requests accepted by SEOC.
- When an agency is submitting a resource request via ETEAM, please ensure that the requesting agency is listing their organization in the "Requesting Organization" field (i.e. XXXXX County, New Jersey Department of XXXXXX, etc.). For all County OEM Agencies, please add a summary note in the "Summary of Actions Taken" whether the County Agency can or cannot fill the request and why it cannot be filled (i.e. All vendors have been contacted, vendors cannot meet the request and that you have advised the requester they should continue to reach out to their vendors).
  - Additionally, please include the timeline of "When Needed" and "Quantity of Unit of Measure" filled in (i.e. 1,000 nitrile gloves or 250 N95 masks, etc.).
  - Please enter an actual quantity of items needed (not cases, boxes, etc.)
- For specific procurement guidance from Treasury, refer to memo sent from the NJEOC on March 15th at 1557hrs.
  - All resource requests must go through County OEMs to NJOEM. Follow normal procedures for requesting resources through E Team.
  - For PPE Requests, please enter the following in the Block - "Tracking Number - State"
    - PPE - Health (Health can submit in bulk)
    - PPE - Non-Health (Each item needs to be submitted separately)
- For Non-Health Care facility related resource requests, the requests must be broken down into separate requests. For example, masks and gloves will go on 2 separate resource requests in ETEAM.
- Please source household commodity resources such as bleach, toilet paper, hand sanitizer, disinfectant wipes etc. through your own channels.
- NJDOH is providing health care facilities PPE from Health & Human Services – Strategic National Stockpile

### Activations and Declarations:

- All County EOCs are Activated
- State of Emergency Declarations (SEOC was notified through ETeam);
  - 13 Counties
  - 196 Municipalities





- Port Authority of NY & NJ EOC is at a Level 2 activation 0900-1700hrs.
- NJ Transit EOC is activated.

### External Operations:

- N95 Battelle Critical Care Decontamination System (CCDS)
  - The New Jersey Office of Emergency Management (NJOEM) has secured Battelle CCDS to assist healthcare providers, first response agencies, and any other agencies in decontaminating their N95 respirators at NO CHARGE to the sending agencies.
  - The Battelle CCDS addresses the current shortage of critical Personal Protective Equipment across the United States. Battelle CCDS is designed to work on N95 respirators to decontaminate biological contaminants including novel coronavirus (SARS-CoV-2). The system is centrally located in Edison Township (Middlesex County) and will service the entire State.
  - **Turnaround time is projected to be 24-72 hours.**
  - For more information on this system, please visit <http://www.battelle.org/decon>
  - Battelle representatives will coordinate the enrollment and decontamination process for interested agencies. If you have additional questions or would like to enroll in the program, you can either complete the form located at <https://www.battelle.org/inquiry/offerings-and-services/covid-response> or contact one of the Battelle representatives assigned to NJ:  
Andre LaFreniere: (401) 935-0084 | [lafreniere@battelle.org](mailto:lafreniere@battelle.org)  
Josh Arnold: (614) 512-8057 | [arnoldj@battelle.org](mailto:arnoldj@battelle.org)  
All questions from interested agencies should be directed to the above Battelle contacts.
  - **43 boxes of masks were received on 4/22 and processed**
  - **Daily deliveries of PPE for the decontamination process are now expected**
  - **NJ-AHMIT is working with FEMA RII, the Defense Logistics Agency (DLA) and Battelle to track the submitting agencies and volume of masks**
- Field Medical Stations
  - Cooper Salem Hospital and JKF Hospital are in receipt of finalized MOA's between their hospital systems and DOD. The MOA's are being put in place to facilitate DOD personnel working in the hospital systems starting April 20 with the following: 12 DOD staff assigned to JKF and 28 DOD staff assigned to Cooper Salem.
  - Secaucus Field Medical Station (FMS) is currently staffed by **89** members, which consist of NJ National Guard, NJSP personnel, NJDOH, contractors, and facility staff and is currently operational. **73** patients currently at the location. Site has received a total of **220** patients.
  - Edison Field Medical Station (FMS) is currently staffed by **108** members, which consist of NJ-AHMIT, NJ National Guard, NJSP, contractors, DOD UAMTF, NJDOH, and facility staff and is currently operational. **20** patients currently at the location. Site has received a total of **74** patients.
  - Atlantic City Field Medical Station (FMS) is currently staffed by **150** members, which consist of NJ-AHMIT, NJ Guard, NJSP, DOD. Site has received a total of **3** patients.
- Temporary Morgue Sites



- Effective Monday, 4/20, the management of the Temporary Morgue sites transitioned to the Mortuary Operations Group consisting of NJDOH, NJOME, **NJOEM**, United States Army of Engineers, NJ National Guard and NJSP.
- Both Sites are fully operational and continue to decompress facilities throughout the State.
- Decompression Procedures were forwarded to all LTC's, Hospitals, ME Offices and funeral homes
- Updated information for hospitals about operations and how to transfer patients to the temporary morgues is available at: <https://nj.gov/health/me/covid19/>
  - North - University Hospital, Newark.
    - Currently staffed by **Missing Persons Unit, I&CES, ERB, FOS, and NJNG.**
    - **Civil Support Team is scheduled to visit April 24 to review PPE procedures.**
  - Central - location will be left undisclosed
    - Currently staffed by **Missing Persons Unit, I&CES, ERB, FOS, TSB, and NJNG**
    - **Civil Support Team visited the site on April 23 to review PPE procedures.**
- Skilled Nursing In-Patient Facilities
  - East Orange General Hospital
    - 250 Bed Capacity
    - Project is 90% completed.
  - Bergen New Bridge Medical Center Gymnasium
    - 30 Bed Capacity
    - Project is 100% completed.
  - Bergen New Bridge Medical Center Medical Tent
    - 100 Bed Capacity
    - Project is **35%** completed.
    - **Turn over to State of New Jersey projected for April 29<sup>th</sup> pending all final inspections.**
  - St Francis Medical Center
    - 37 Bed Capacity
    - Project is **72%** complete
    - **Turn over to State of New Jersey projected for April 30<sup>th</sup> pending all final inspections.**
- Community Based Test Sites
  - **Both Community Based Test Sites will continue to ONLY test SYMPTOMATIC INDIVIDUALS at this time.**
  - Starting Sunday, March 29<sup>th</sup>, an alternate schedule will be implemented in anticipation of a maximum capacity of 500 specimen collections per day. This alternating schedule will be as follows:
    - Bergen Site Operating: Thursday 4/23, Friday 4/24, Sunday 4/26, Tuesday 4/28
    - Monmouth Site Operating: Saturday 4/25, Monday 4/27, Wednesday 4/29
  - On Saturdays, the Monmouth site will be dedicated to collecting samples from only symptomatic health care workers and symptomatic first responders. Until further notice this will be the alternating weekly schedule.
    - Monmouth County Mobile Testing Site will be open **4/25 to symptomatic individuals at 0800 hrs.**
    - Bergen County Mobile Testing Site is **open today and tested 451. Site will be closed 4/25.**



- Federal support for sites has been extended through the end of May.

### **New Jersey State Policies and Announcements**

- New Jersey Executive Orders  
[https://nj.gov/infobank/eo/056murphy/approved/eo\\_archive.html](https://nj.gov/infobank/eo/056murphy/approved/eo_archive.html)
- New Jersey Administrative Orders  
[https://nj.gov/governor/news/ao/approved/ao\\_archive.shtml](https://nj.gov/governor/news/ao/approved/ao_archive.shtml)
- U.S. Small Business Administration (SBA) is offering low-interest federal disaster Loans  
<https://www.sba.gov/offices/district/nj/newark/about-us>  
<https://disasterloan.sba.gov/ela>
- COVID-19/Novel Coronavirus Information for New Jersey Businesses  
<http://cv.business.nj.gov>
- Amid ongoing COVID-19 pandemic, Governor Murphy, Governor Cuomo, Governor Lamont announce alignment of state policies for marinas and boatyards.  
<https://nj.gov/governor/news/news/562020/approved/20200418c.shtml>
- New Jersey extends State tax deadline from April 15 to July 15, 2020. Additionally, the State Fiscal year is extended through September 30.
- Executive Order No. 107 Violation Reporting form <https://covid19.nj.gov/violation>
- Labor/Civil Service Guidelines and FAQs for state employees  
<https://www.nj.gov/governor/news/news/562020/approved/20200310c.shtml>
- AO-06 further clarification on essential businesses  
[http://d31hzlkh6di2h5.cloudfront.net/20200330/49/ef/6b/66/911f57575b4616fb2dd79d8a/AO2020-6\\_signed.pdf](http://d31hzlkh6di2h5.cloudfront.net/20200330/49/ef/6b/66/911f57575b4616fb2dd79d8a/AO2020-6_signed.pdf)
- Further clarification on essential or non-essential businesses use following link  
<https://faq.business.nj.gov/en/articles/3820777-i-m-not-sure-if-my-business-needs-to-close-due-to-the-state-s-covid-19-directives-what-additional-guidance-is-there>

### **Federal Links and Announcements**

- President Donald J. Trump issued a Major Disaster Declaration FEMA-4488-DR-NJ on March 25<sup>th</sup> for the State of New Jersey. The declaration will provide federal assistance to supplement statewide recovery efforts affected by the COVID-19 pandemic beginning on January 20, 2020.
- President Trump has unveiled Guidelines for Opening Up America Again, a three-phased approach based on the advice of public health experts. These steps will help state and local officials when reopening their economies, getting people back to work, and continuing to protect American lives.  
<https://www.whitehouse.gov/openingamerica/>
- FEMA Coronavirus (COVID-19) Response web page <https://www.fema.gov/coronavirus>
- CDC [www.cdc.gov/COVID19](http://www.cdc.gov/COVID19)
- CDC Use of Cloth Face Coverings  
<https://www.cdc.gov/coronavirus/2019-ncov/prevent-getting-sick/diy-cloth-face-coverings.html>
- CDC Guidance for first responders and PSAPs :<https://www.cdc.gov/coronavirus/2019-ncov/hcp/guidance-for-ems.html>



- CDC guidance on Criteria for Return to Work for Healthcare Personnel with Confirmed or Suspected COVID-19 (Interim Guidance). This applies to First Responder Community as well.  
<https://www.cdc.gov/coronavirus/2019-ncov/hcp/return-to-work.html>
- COVID-19 Information for the First Responder Community  
<https://www.dhs.gov/science-and-technology/covid-19-info-first-responders>
- OSHA's memorandum expands temporary enforcement guidance provided in OSHA's March 14, 2020, memorandum to Compliance Safety and Health Officers for enforcing annual fit-testing requirements of the Respiratory Protection standard, 29 CFR § 1910.134(f)(2), with regard to supply shortages of N95s or other filtering face piece respirators (FFRs) due to the coronavirus disease 2019 (COVID-19) pandemic. The March 14 guidance, which applied to healthcare, now applies to all workplaces covered by OSHA where there is required use of respirators. This memorandum will take effect immediately and remain in effect until further notice <https://www.osha.gov/memos/2020-04-08/expanded-temporary-enforcement-guidance-respiratory-protection-fit-testing-n95>
- **USNS Comfort is no longer accepting new patients and will be departing in the near future**

#### Other Agency Links:

- NJDOE <https://www.nj.gov/education/topics/index.shtml>
- The Department of Labor (DOL) created a new web portal for NJ residents with questions regarding unemployment applications inquiries. **It also allows applicants to directly contact DOL via the need help drop down menu** <https://www.myunemployment.nj.gov/>

#### Meetings, Calls, Press Conferences:

- Governor's Press Conference: **1300hrs on April 25**